

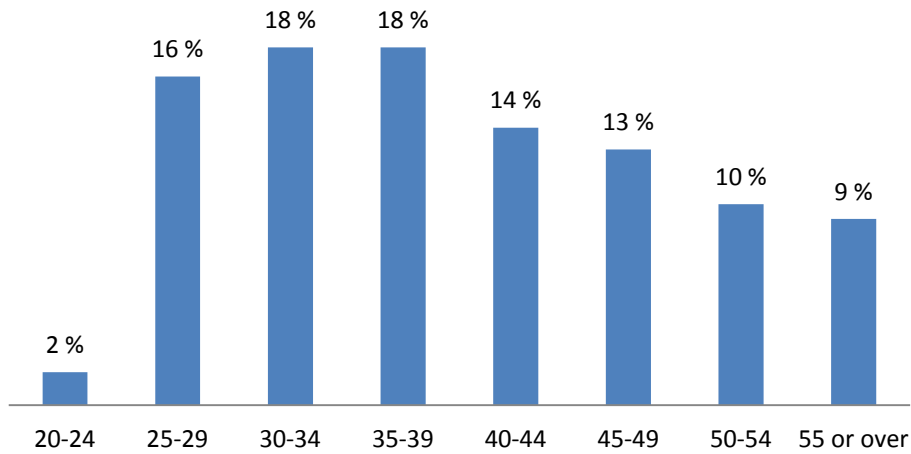


Recruitment Summary and Age Pyramid - Capgemini Finland

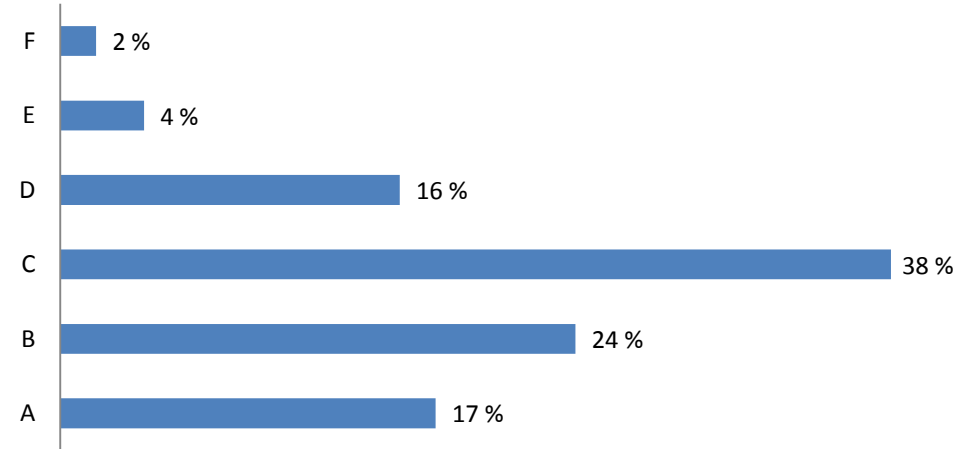
5.5.2015

Capgemini Finland

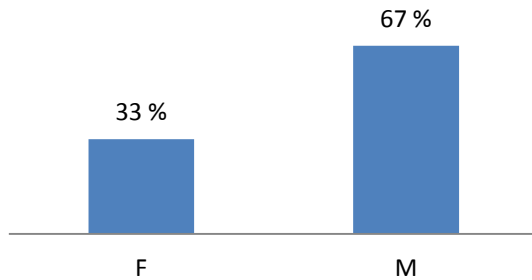
Age Range (average = 40)



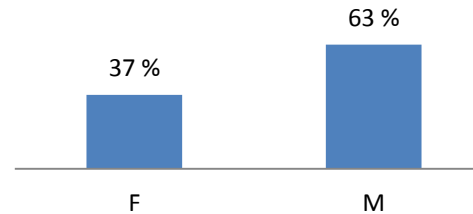
Capgemini Experience Pyramid



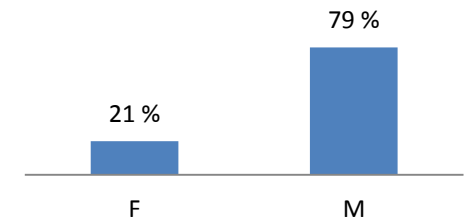
Gender Range - Capgemini



Gender Range - Apps

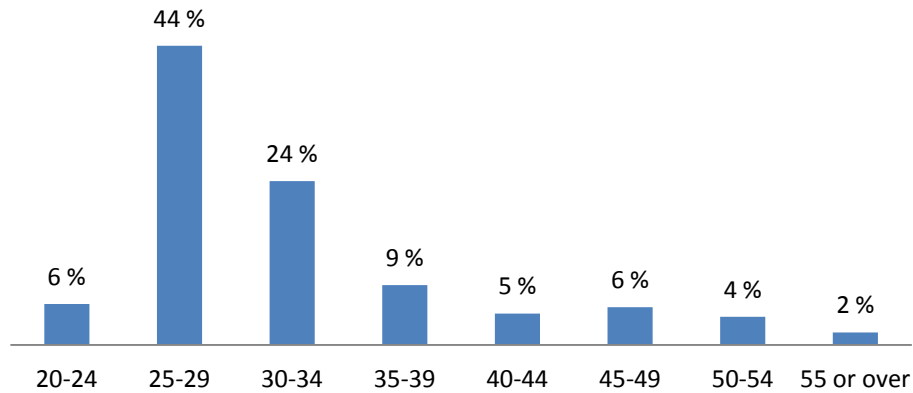


Gender Range - Infra



2012-2015 Recruitments

Capgemini Recruitments 2012-2015 - Age Range



•40-44

1. Applications Consultant
2. Head of IBX Product Management
3. Service Delivery Manager
4. Sales Leader
5. Software Engineer
6. Project Management
7. Service Centre Analyst 2
8. Vice President, Infrastructure Services
9. Win Server / HP Storage Specialist

•45-49

1. Service Delivery Manager
2. Team Manager, Logistics & Production team
3. Team Manager, SAP Project Management
4. Logistics coordinator
5. Senior Account Manager
6. Program Manager
7. Senior Security Consultant
8. Senior Vice President
9. Sales Executive
10. Managing Solution Architect
11. Engagement Director
12. Account Executive

•50-54

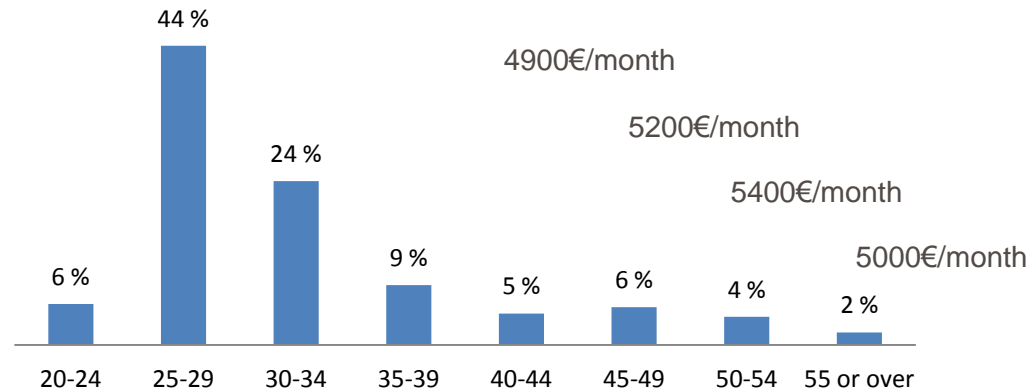
1. Application Consultant
2. Application Consultant
3. Technical Consultant
4. Servers&Storage Engineer
5. CTO of IBX Platform
6. Logistics Coordinator
7. Logistics Coordinator
8. Program Manager
9. Senior Enterprise Architect

•55 or over

1. 55v. Service Delivery Director (2012)
2. 61v. Logistics Coordinator (2013)
3. 61v. Senior Applications Consultant (2015)
4. 58v. Service Centre Analyst 2 (2015)

2012-2015 Recruitments – with salary medians

Capgemini Recruitments 2012-2015 - Age Range



•40-44

1. Applications Consultant
2. Head of IBX Product Management
3. Service Delivery Manager
4. Sales Leader
5. Software Engineer
6. Project Management
7. Service Centre Analyst 2
8. Vice President, Infrastructure Services
9. Win Server / HP Storage Specialist

•45-49

1. Service Delivery Manager
2. Team Manager, Logistics & Production team
3. Team Manager, SAP Project Management
4. Logistics coordinator
5. Senior Account Manager
6. Program Manager
7. Senior Security Consultant
8. Senior Vice President
9. Sales Executive
10. Managing Solution Architect
11. Engagement Director
12. Account Executive

•50-54

1. Application Consultant
2. Application Consultant
3. Technical Consultant
4. Servers&Storage Engineer
5. CTO of IBX Platform
6. Logistics Coordinator
7. Logistics Coordinator
8. Program Manager
9. Senior Enterprise Architect

•55 or over

1. 55v. Service Delivery Director (2012)
2. 61v. Logistics Coordinator (2013)
3. 61v. Senior Applications Consultant (2015)
4. 58v. Service Centre Analyst 2 (2015)



About Capgemini

With almost 140,000 people in over 40 countries, Capgemini is one of the world's foremost providers of consulting, technology and outsourcing services. The Group reported 2013 global revenues of EUR 10.1 billion.

Together with its clients, Capgemini creates and delivers business and technology solutions that fit their needs and drive the results they want. A deeply multicultural organization, Capgemini has developed its own way of working, the Collaborative Business Experience™, and draws on Rightshore®, its worldwide delivery model.



www.capgemini.com

